

Poroti School

2023

In term 2 senior students were challenged to channel their creative sides and produce a mural for their house-groups.

It started with discussion, and then visual symbols to show what the students wanted to express about their group. By managing themselves, participating and contributing, the end results are proudly displayed.



Kauri

Laquandre Erueti

Travis Crowson

Maturangi Arama-Heta

Maia Shelford

Sonny Kendall-Bercich

Te Aroha Cooper



Kauri

Laquandre

This part of our mural shows a Tui bird. The Tui is a bird native to NZ that has beautiful shades of our House colour on it. Did you know that Tui birds are excellent at copying sounds? They can copy the calls of other bird species and car alarms.



Kauri Travis

The landscape in our mural shows sand dunes before a dark stretch of water and mountains in the distance. It shows how lots of environments are important to the Kauri Tree and all New Zealanders.

The Te Pahi sand dunes are in Northland and are the tallest in NZ. They are 150m high.



Kauri Maia

We chose to do a night sky and Waka to show how the stars were important to early Maori explorers and are still important to us today. We celebrate Matariki every year and we wanted to show that our team is always ready for any challenge.



Kauri

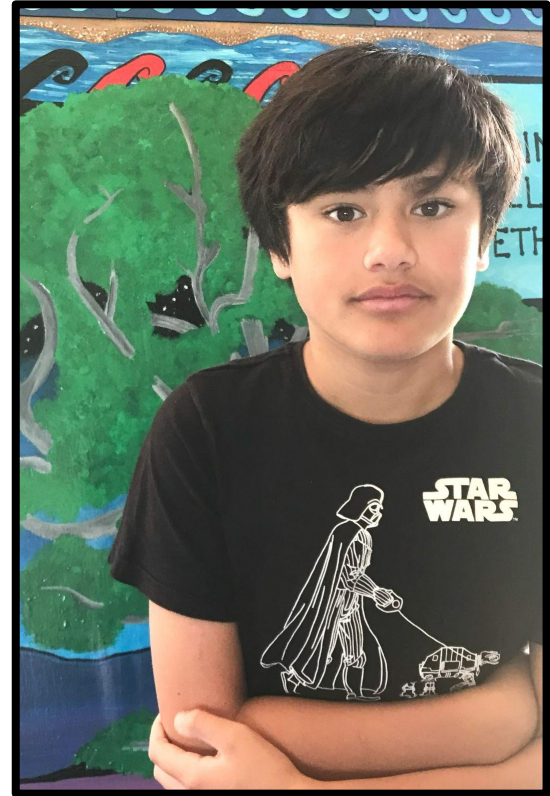
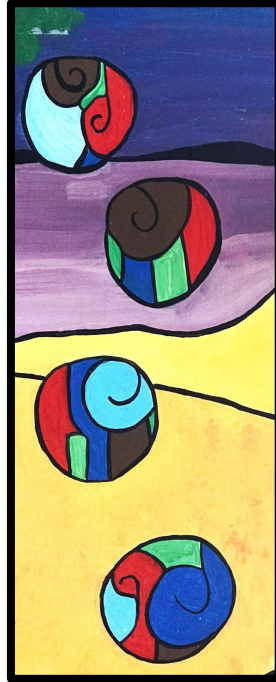
Te Aroha

Our group included Koru shapes. The koru symbolises new life, growth, strength and peace. As a team we are strongest together and we are welcoming to all. Our team is always ready for new experiences which help us grow.



Kauri Sonny

The 'bubbles' on our mural are there to showcase colours and remind us of the cycles in the environment. Blues for our House and water, green for new energy and growth. Finished with red and black, the traditional Maori colours, they will remind our team to remember the 'big picture' and how we are all part of it.



Kauri

Maturangi

There is a gecko and a weta on our mural. This reminds our team to look after our environment. From the mighty Kauri tree to the tiniest creatures we are all connected. We think it is important to look out for each other and support each other, just like trees support the insects, animals and birds.



Kowhai

Te Hina O'Leary

Emma Morling

Aimi Morling

Tiaan Fowlie

Peaches Peeni-Takarangi

Tahua O'Leary



Kowhai

Te Hina

We have Bellbirds and Fantails on our mural. The fantail opens up its tail to show its 'true colours' which is what we have been learning to do. The Bellbirds play a big part in pollinating our native trees and ensuring a new season of growth happens. As a team we are all about growing together over time.



Kowhai

Aimi

We chose to have a campfire on our mural to show that as a team we are flaming hot, bright sparks and a light in the dark.



Kowhai Emma

Kowhai team is always aiming for first place and to be superstars. If we work together and remember that every one of us is important and unique, we will always be winners.



Kowhai

Tahua

This part of our mural shows that just like the fish in the rivers and oceans, sometimes we need to swim against the current. We have also painted patterns to show fishing nets because Kai Moana is an important part of our lives.



Kowhai Tiaan

The Kowhai tree is native to New Zealand. Like us, it is bright, cheerful and vibrant. The Kowhai tree and team attract lots of attention and always bring a smile to people's faces.



Kowhai Peaches

This part of the mural reminds our team of Tuakana-teina and how it is important for the more experienced to support others. Kowhai team members know how to support each other and make sure that everyone is included.



Rimu

Puhi Nathan

Jaydn Byrne

Kimberlee Cooper

Jethro Imeson

Leah Carroll

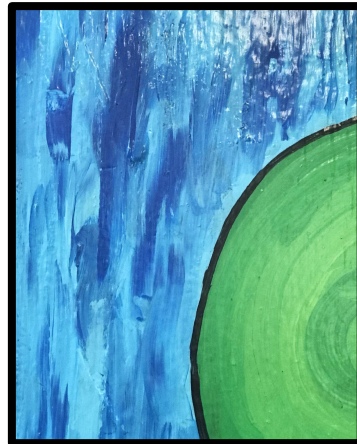
Peri Clarke

Jarred Fowlie

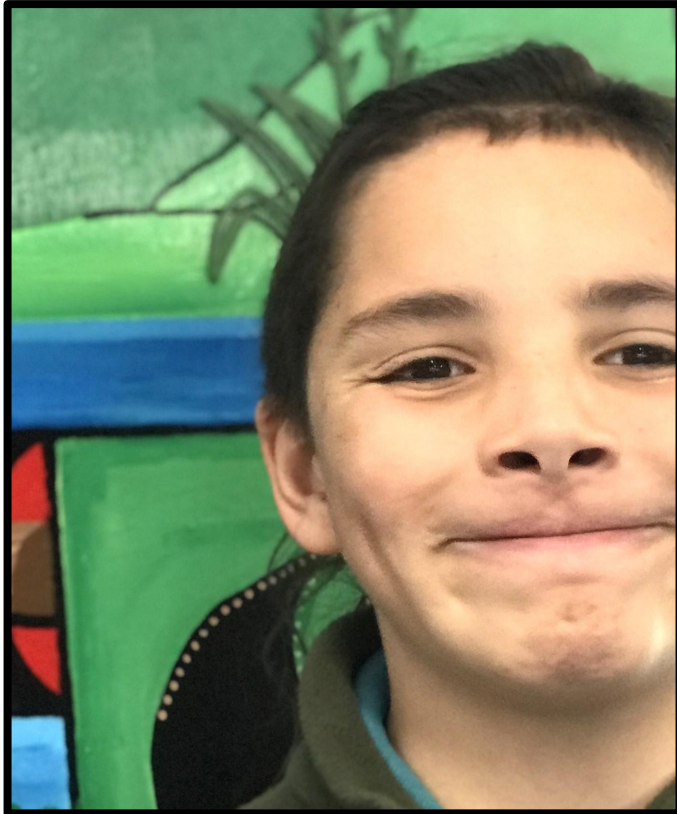


Rimu Leah

Wairua Falls is an important feature of our landscape so we painted part of our mural to look like water. As a team we are strong and always moving. Just like the river we are the team with never ending power.



Rimu Jadyn



This Kiwi bird is our national bird and there are many stories about the Kiwi in the Maori culture. Rimu team are Kiwi kids.



Rimu Puhi

We painted the background to look like Poroti. The Rimu stands tall and graceful with its branches flowing in the wind. Just like the Rimu tree we stand strong and we are flexible in our many talents. Always aiming for the sky.



Rimu

Kimberlee

We decided to use traditional Maori patterns and colours on our mural. The red against the black is a good contrast which makes it bold, just like us.



Rimu

Jethro

We decided to put a Kiwi and a lizard on our mural because our team loves nature and animals. We can be as careful as a Kiwi and as agile as a gecko.



Rimu Peri

The Rimu tree can live for 1000 years and get to 60 meters tall. Like the Rimu tree our team is here for the long run. .

